

塑造智慧变革



HEXAGON

海克斯康



北京
国家会议中心

2018年

9月10-12日

2018.hexagonchina.com.cn

Mobile Mapping Product Line

Alessandro Nuzzo – Product Line Manager Mobile Mapping

2018, September 11th

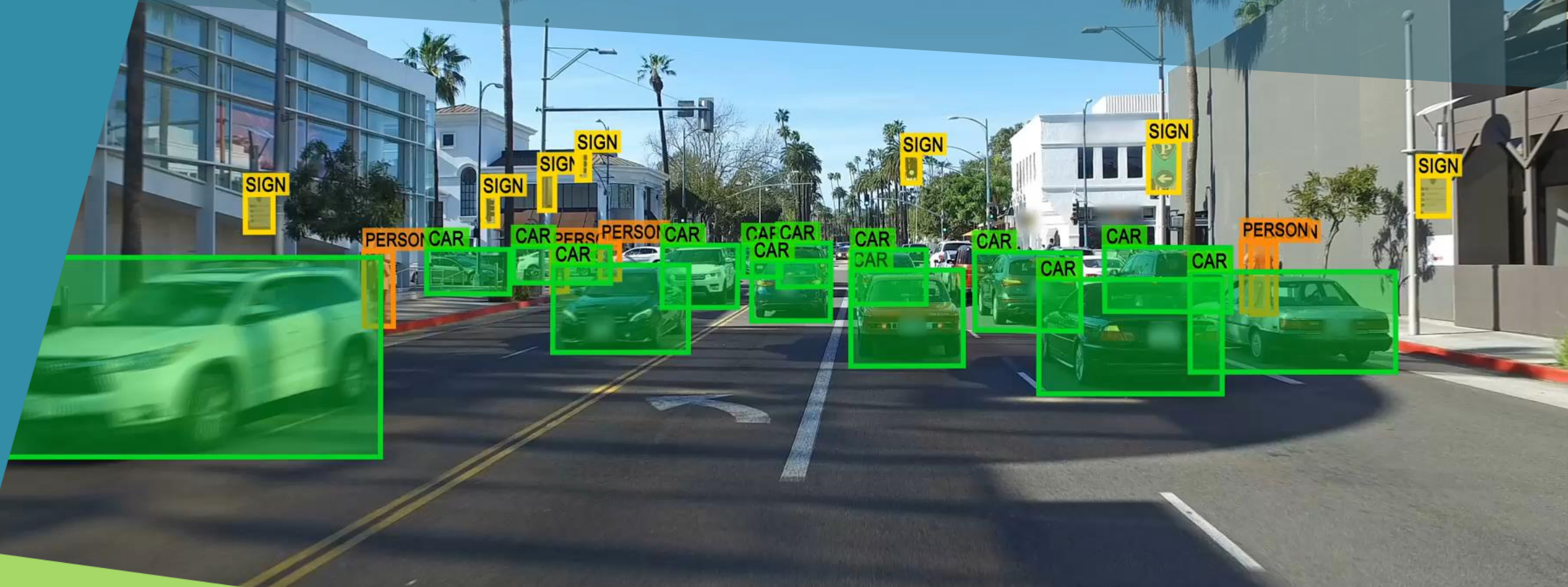


World Population 7.5 Billion and Counting

**3 million People move
to Cities each Week**

**90% of all Data in the World
was created in the last 3 yrs**

Car OEMs announced first Autonomous Vehicles for 2023



Data Ownership is the new Oil





- Topography X,Y,Z
- Topology

- Database completeness
- Information obsolescence



Speed of Change

- After decades spent to map, now we have to control ***dynamic realities***
- The data collection and processing must be faster than the speed of changes of the reality
- ***Accuracy*** is referred to accurate information, ***not just and only X,Y,Z....*** a slow system cannot be accurate





Pegasus:Two

- Vehicle independent System
- Asset Management
- Road Analysis
- Rail Infrastructure Survey
- Survey Grade Accuracy



ADA SIDEWALK RAMP

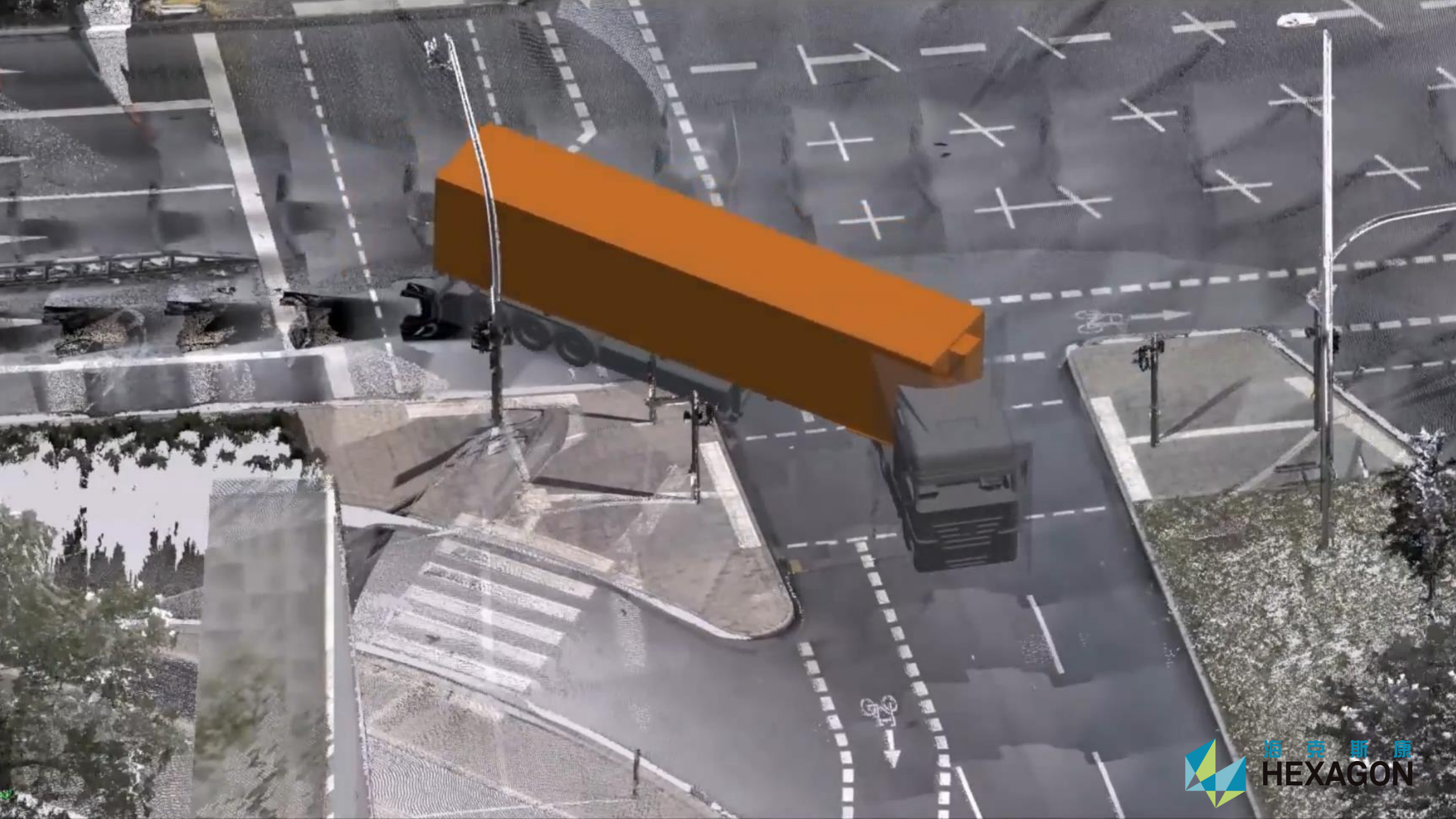
MANHOLE

MANHOLE
MANHOLE

MANHOLE
MANHOLE

PARKING METER

PARKING METER



Boat Application

- Damage Inspections
- Deformation Analysis
- Coastal Erosion
- Harbour inspection





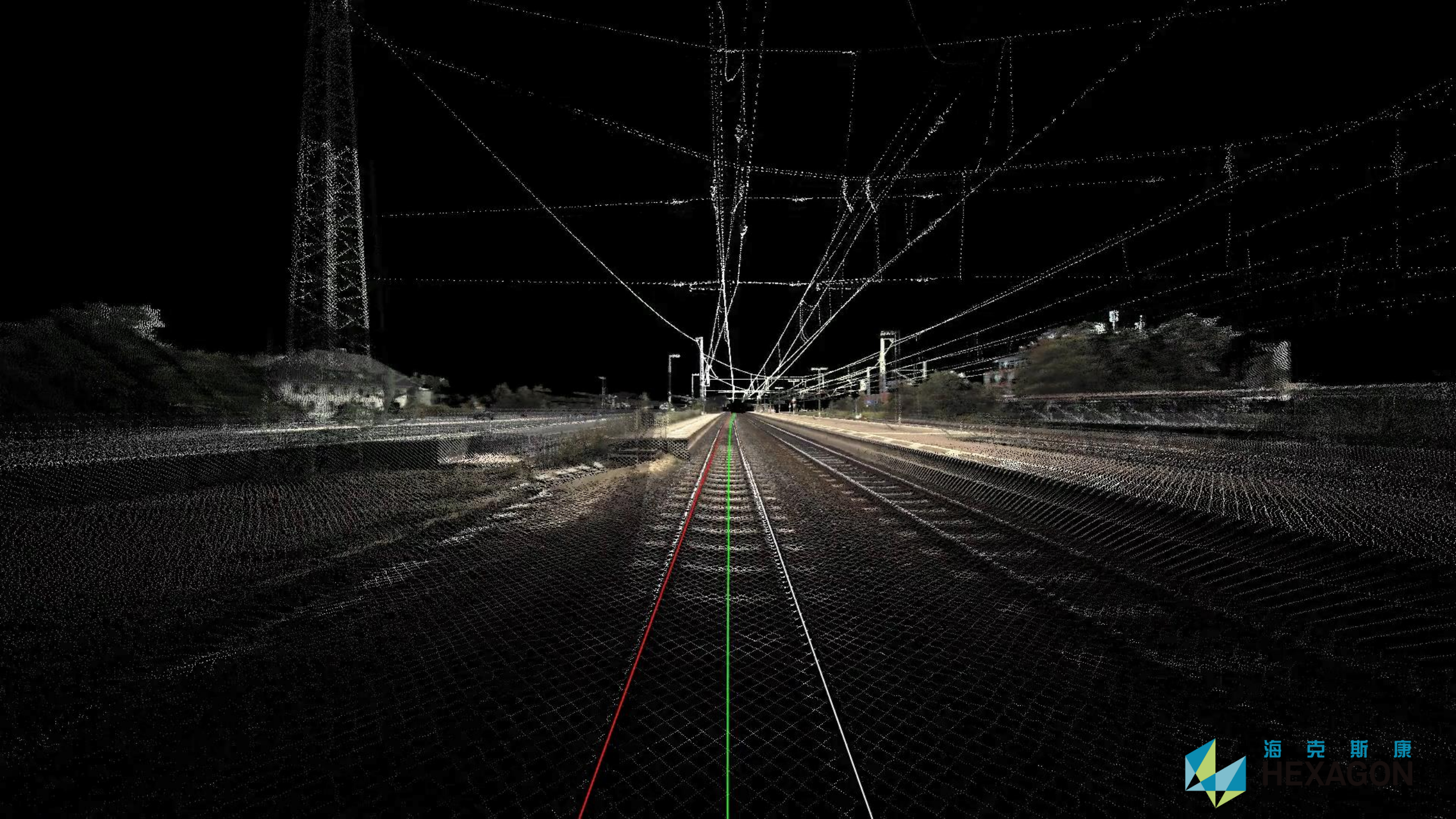
Rail Application

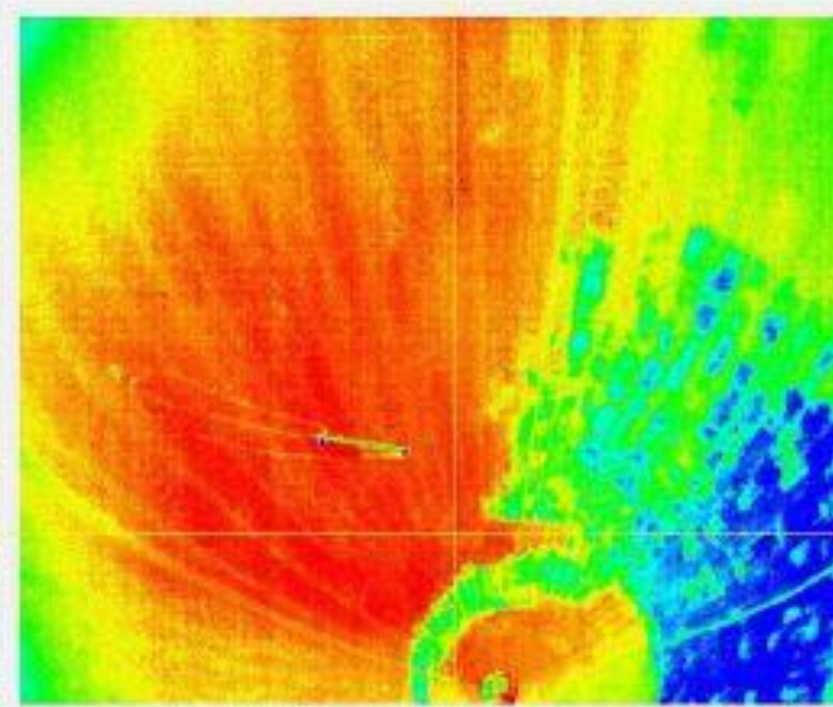
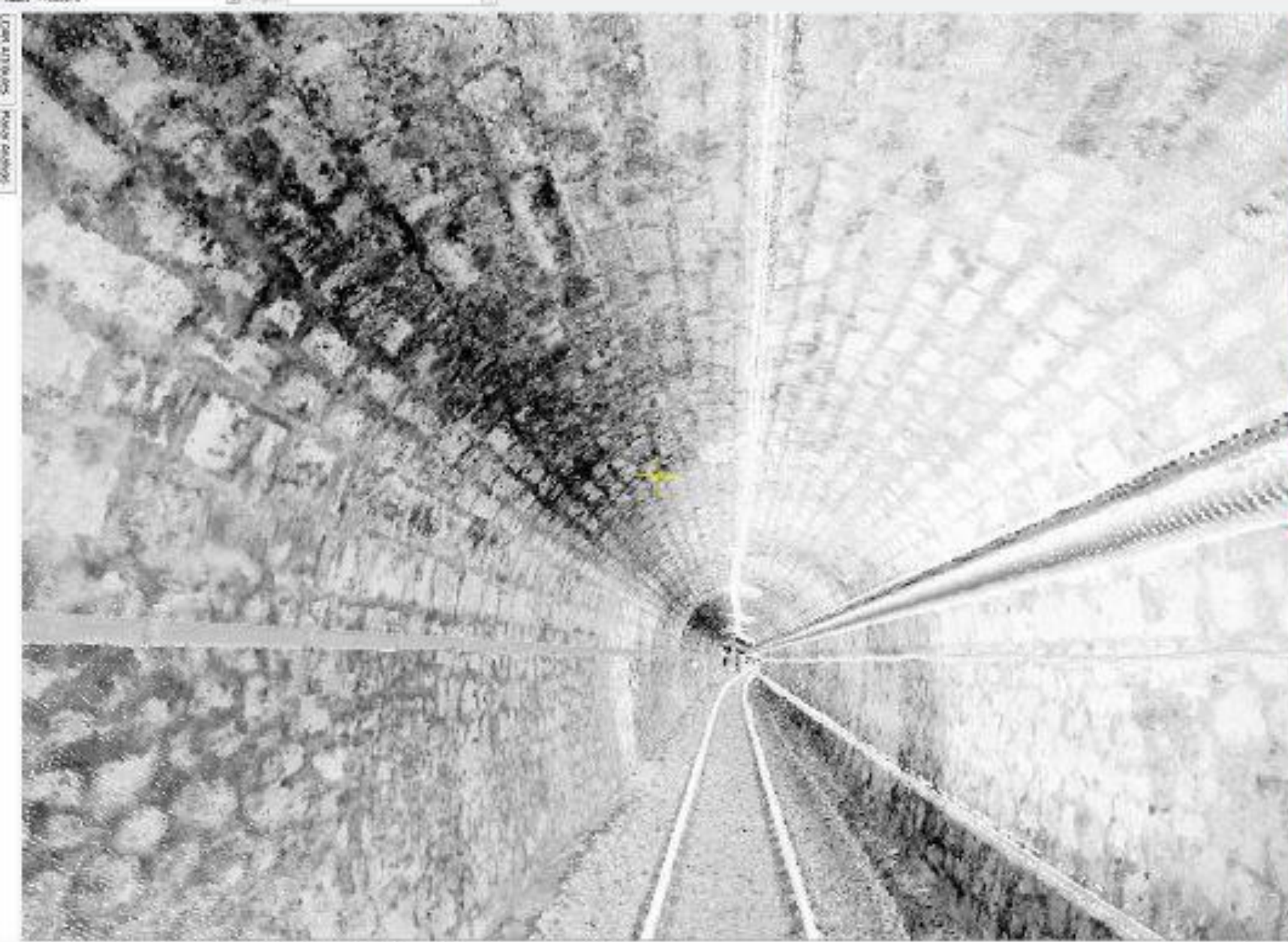
Leica Pegasus:Two

Sensor Platform to combine Ground Penetrating Radar and Thermal Imagery

- Clearances
- Asset / GIS / PTC Mapping
- Track Geometry
- Change Detection
- Catenary Mapping
- Vegetation Mapping







Zoom: 100%

Thermal image

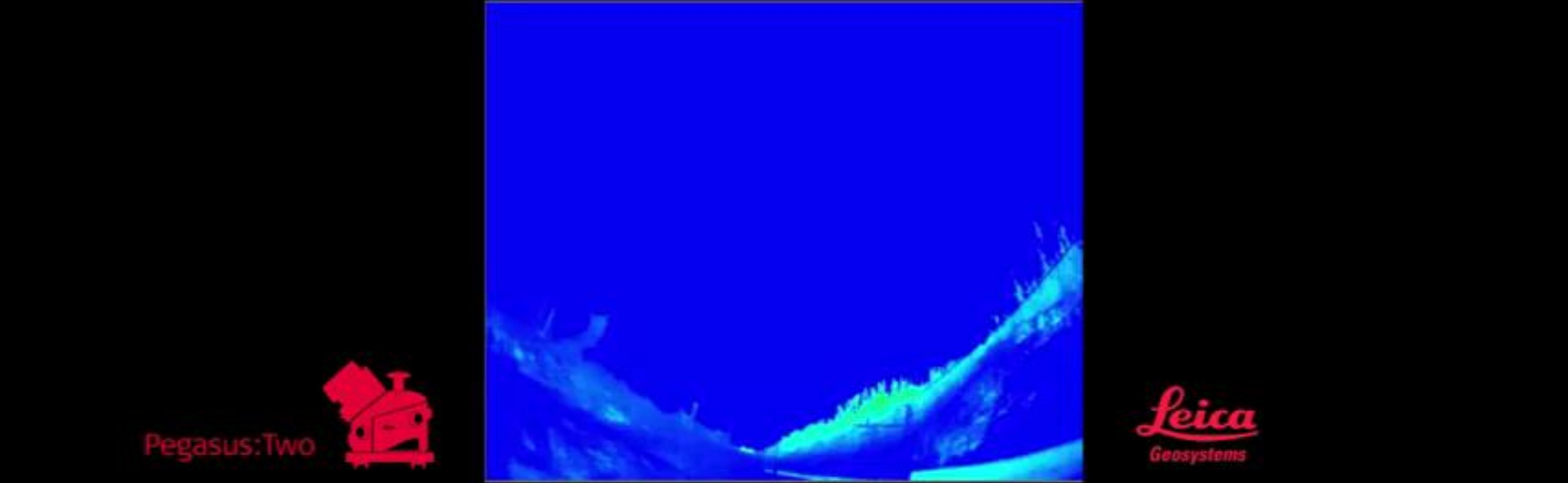
Scale: 0 to 20

Temperature: 16.609 °C

Image: Trad_C-Thermal-0404



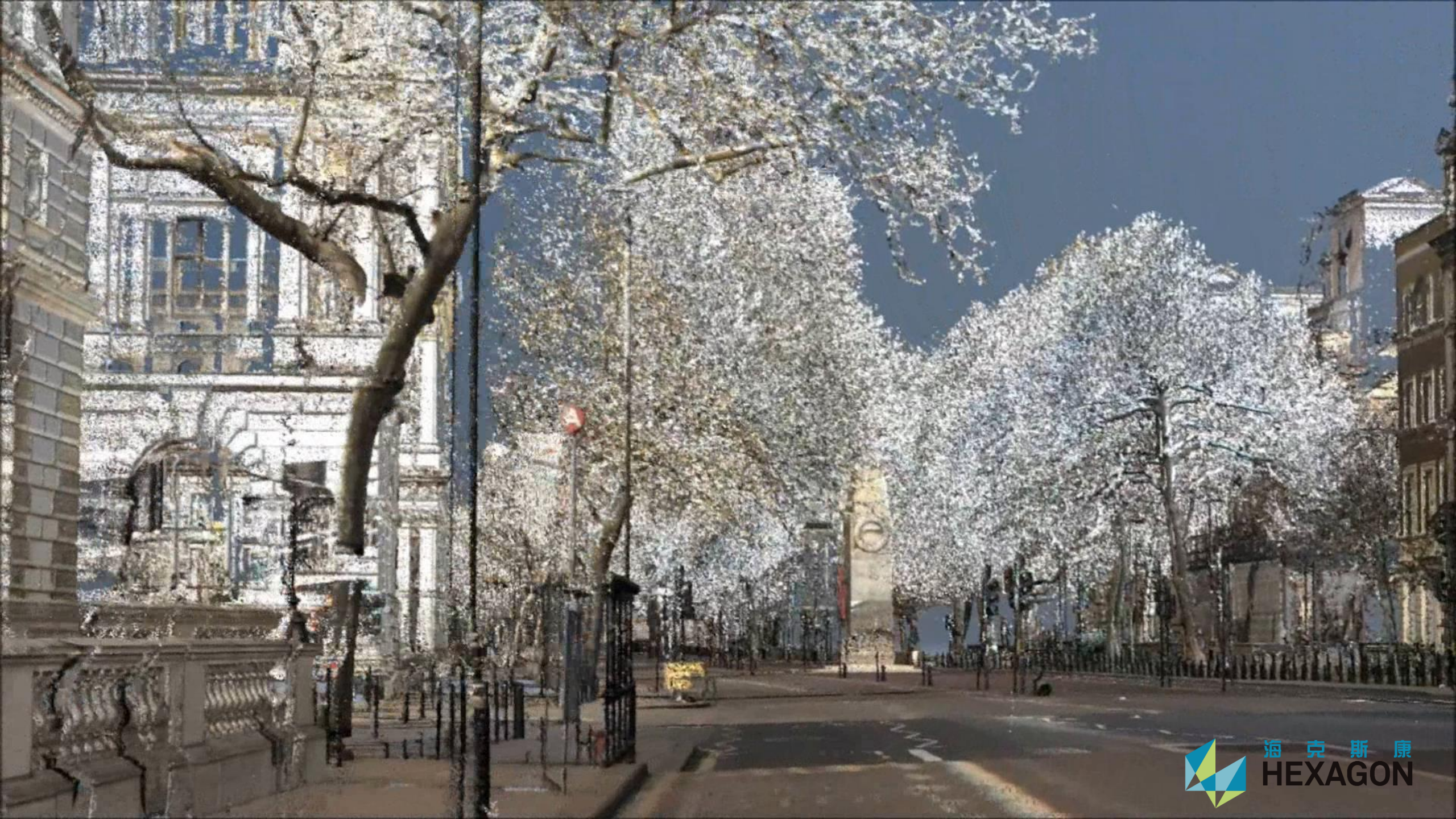
Pegasus:Two and Thermal Imagery





Pegasus:Stream

- Below and Above Ground
- Asset Management
- Buried Objects
- Cavities Detection
- Massive Data Capturing





HEXAGON

CITY DIGITISATION
FOR AUTONOMOUS
VEHICLE REFERENCE
BASE MAPS





Reality Capture

World Wide Road
Digitalisation



OpenDrive

Intersection in OpenDrive
including complete object
information



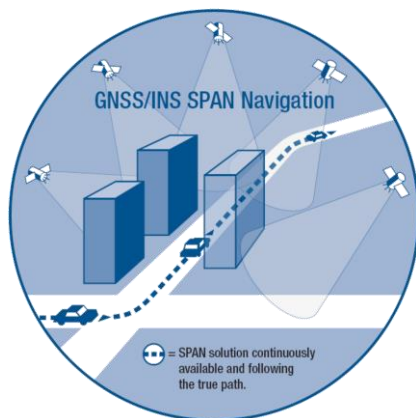
**80% of our Living Space
is Indoor**



**60% of today's Buildings
will still be in use in 2050**

New positioning methods are needed

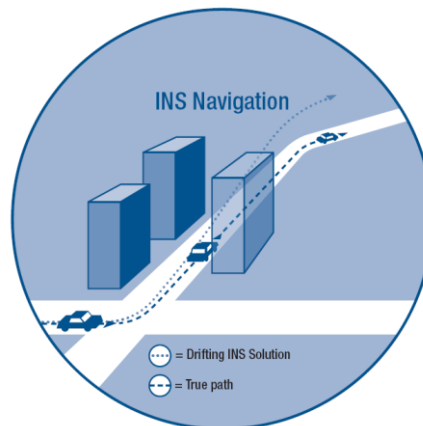
GNSS/INS Navigation



Satellite based positioning systems is the backbone of all mobile mapping
Requires a direct line-of-site to the satellites

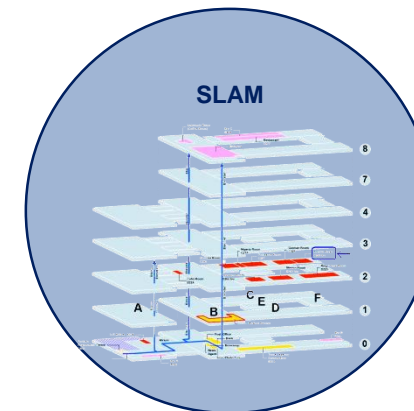
Need Orientation information

INS Navigation



Adding an Inertial Navigation System allows us to determine orientation and navigate without access to satellite signals

SLAM Navigation



A method of measuring the environment and determining a location in that environment at the same time

Outdoor



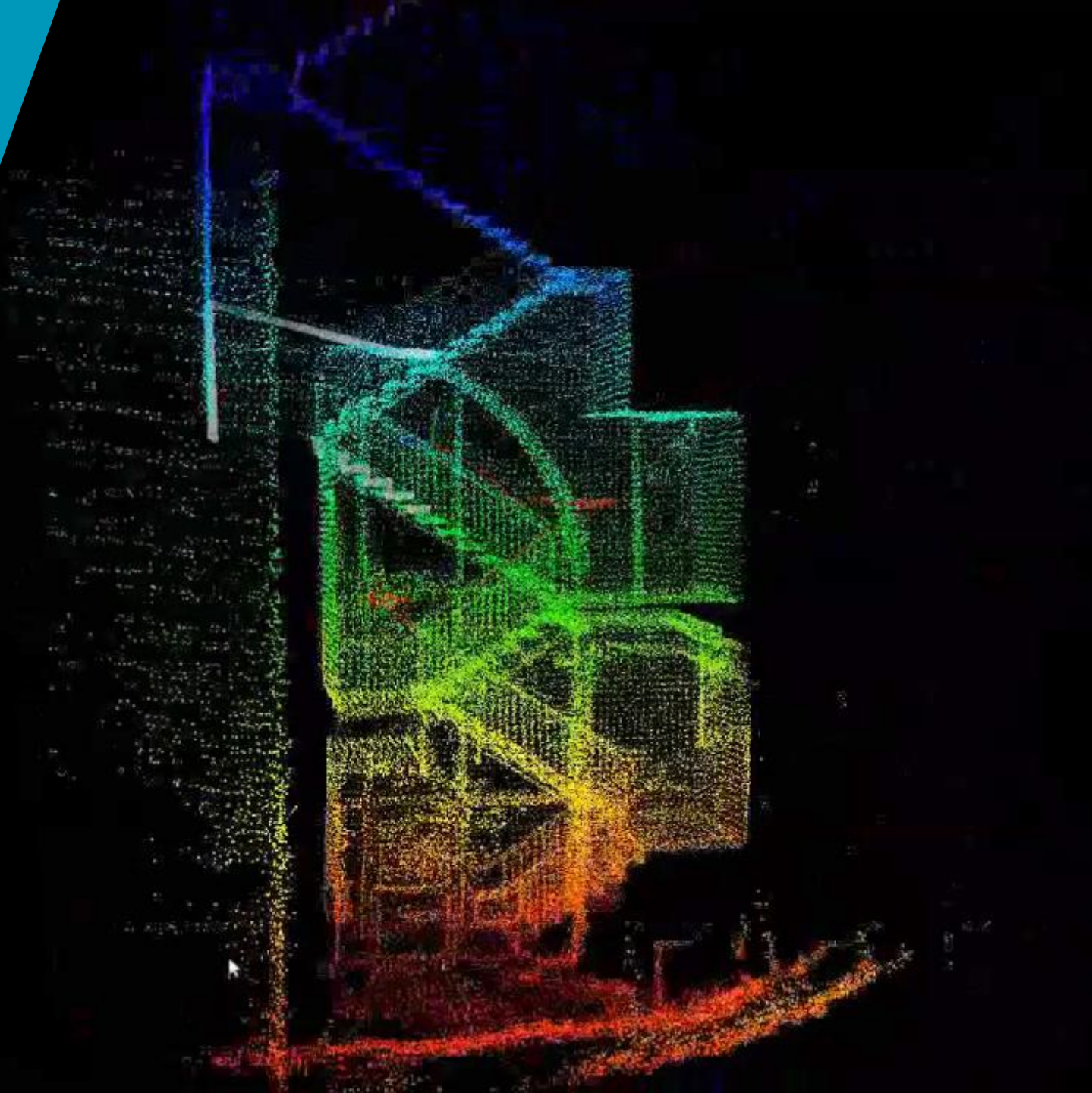
Indoor

SLAM Technology

Simultaneous Location And Mapping

A method of measuring the environment and determining a location in that environment at the same time

- SLAM allows us to measure an arbitrary environment
- No spatial context





Pegasus:Backpack

- Wearable Ultra Light System
- Indoor & Outdoor Survey
- Asset Management
- BIM Documentation
- Disaster Recovery





An aerial photograph of a massive industrial facility under construction in a desert environment. The main building has a light-colored, flat roof with a grid of circular skylights. The structure is surrounded by construction equipment, dirt roads, and other smaller buildings in the background. The sky is clear and blue.

Bayerische Motoren Werke AG (BMW)
plant, San Luis Potosi, Mexico



Laramie-Poudre Tunnel entrance



Baron

TRANS-ALPINE
RACING & SPEED
TOUR
TRANS-ALPINE

Vars

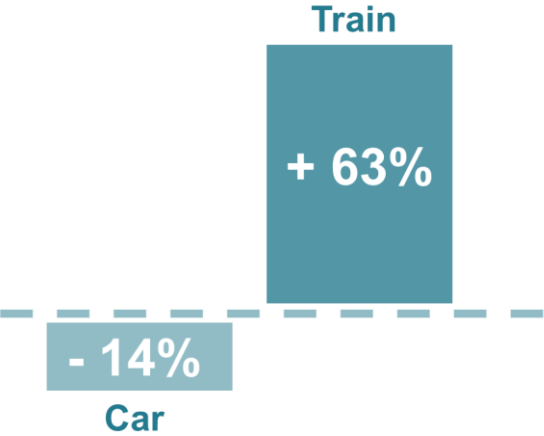
4.725 million passenger journeys
were recorded in one day in London



Transportation Competition

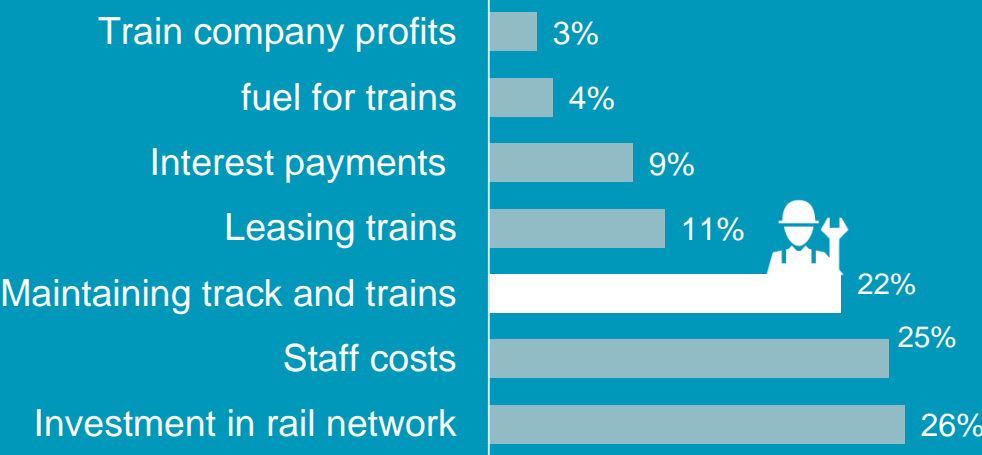


Driving gets cheaper (1980 / 2014)



Source: Independent

Rail ticket price brakedown



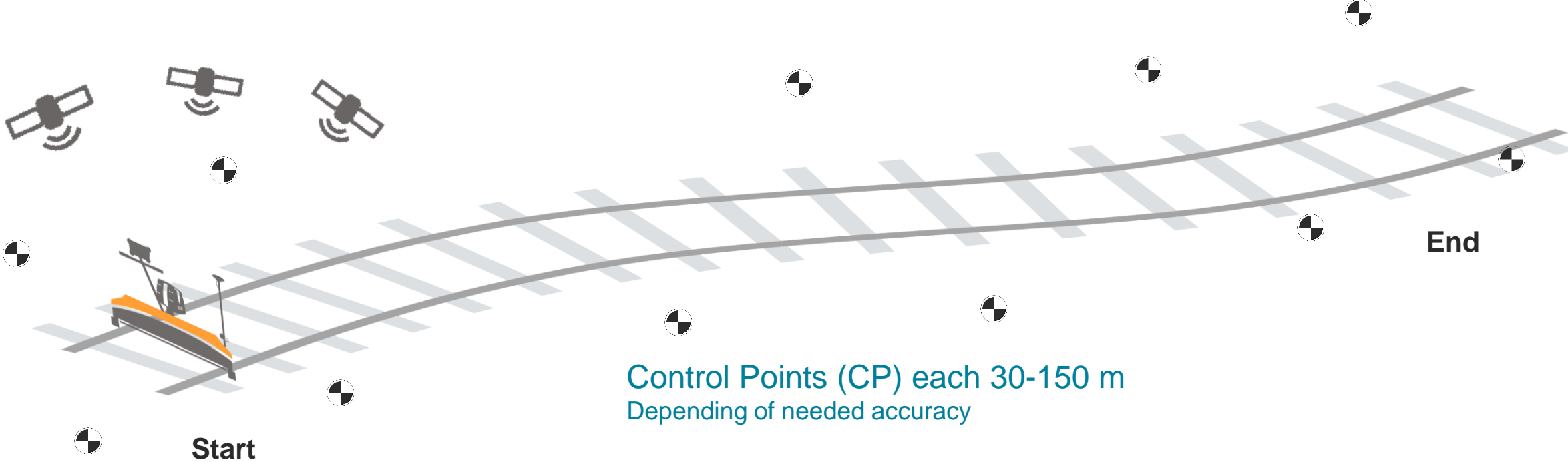


SiTrack:One

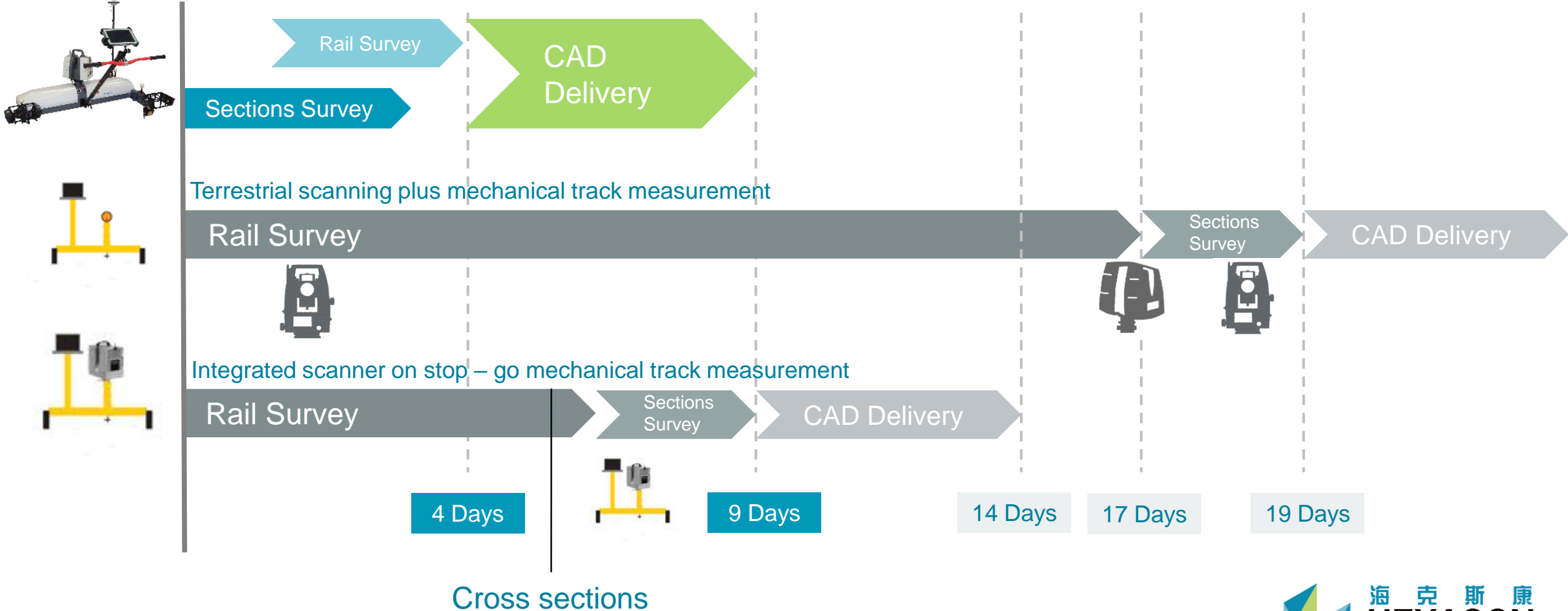
- Fast As-built Rail 3D Capture
- Determination Track-Geometry
- Tunnel Deformation Analysis
- Designed to as-built structure
- Rail Wear Calculation



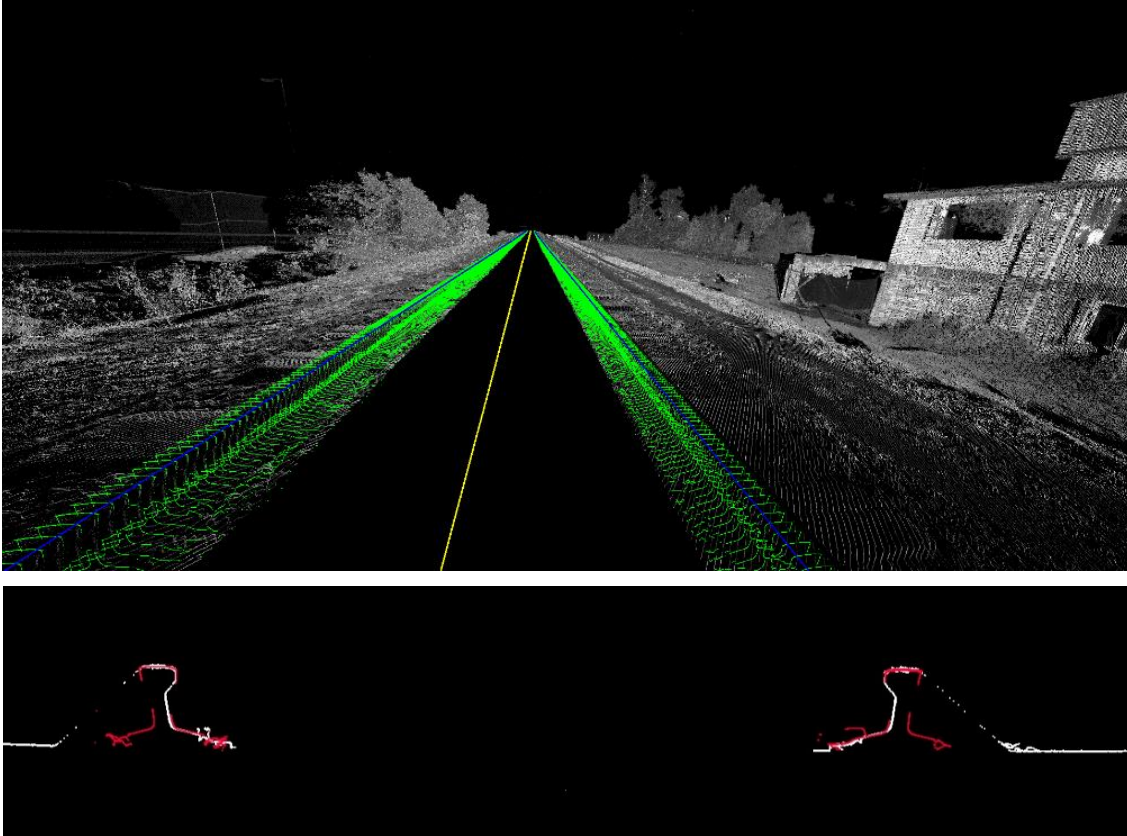
Workflow - 3D Capture - Using GNSS and/or Control Points



Workflow Comparison – 4Km Tunnel Survey



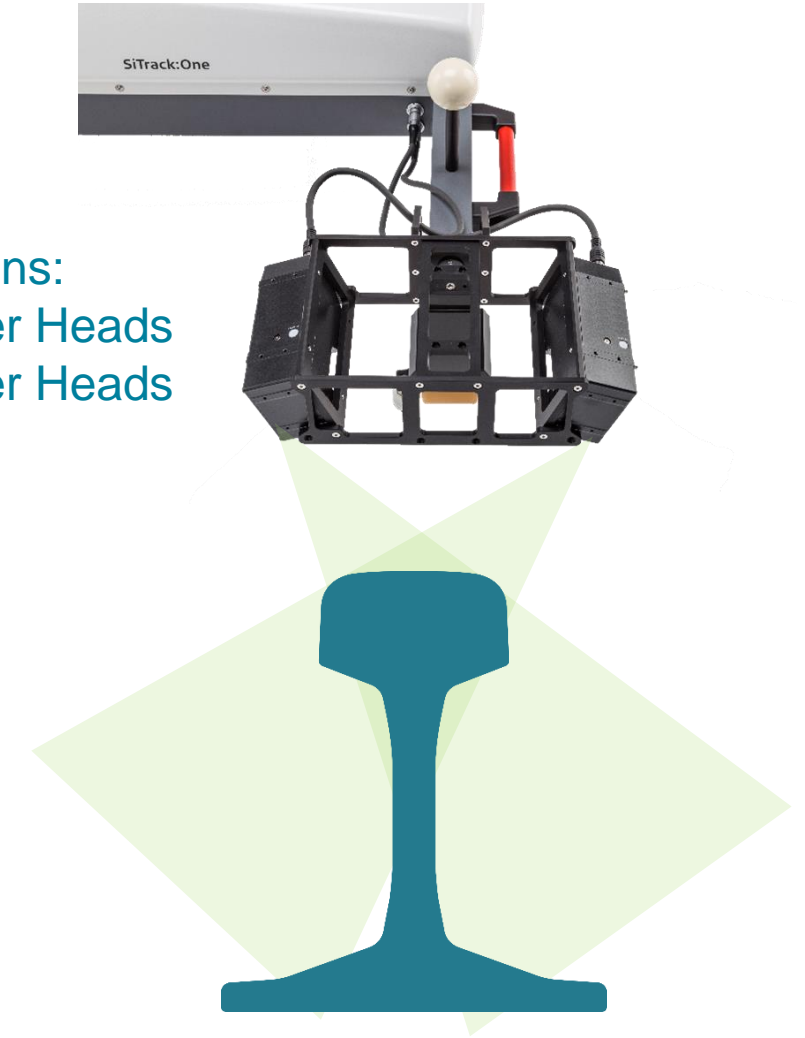
Railway Tasks – New Feature - Rail-Wear-Calculation



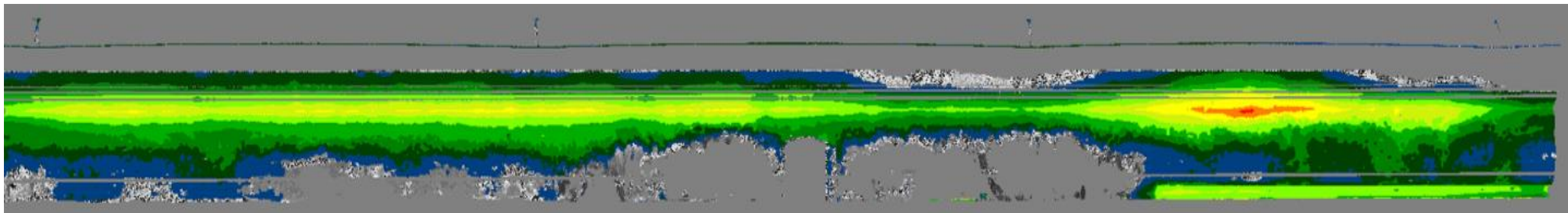
- High resolution rails point cloud
- Rail profile scanners – high-end technology (1000Hz)
- Automated rail information export

Configurations:

- 2 Scanner Heads
- 4 Scanner Heads

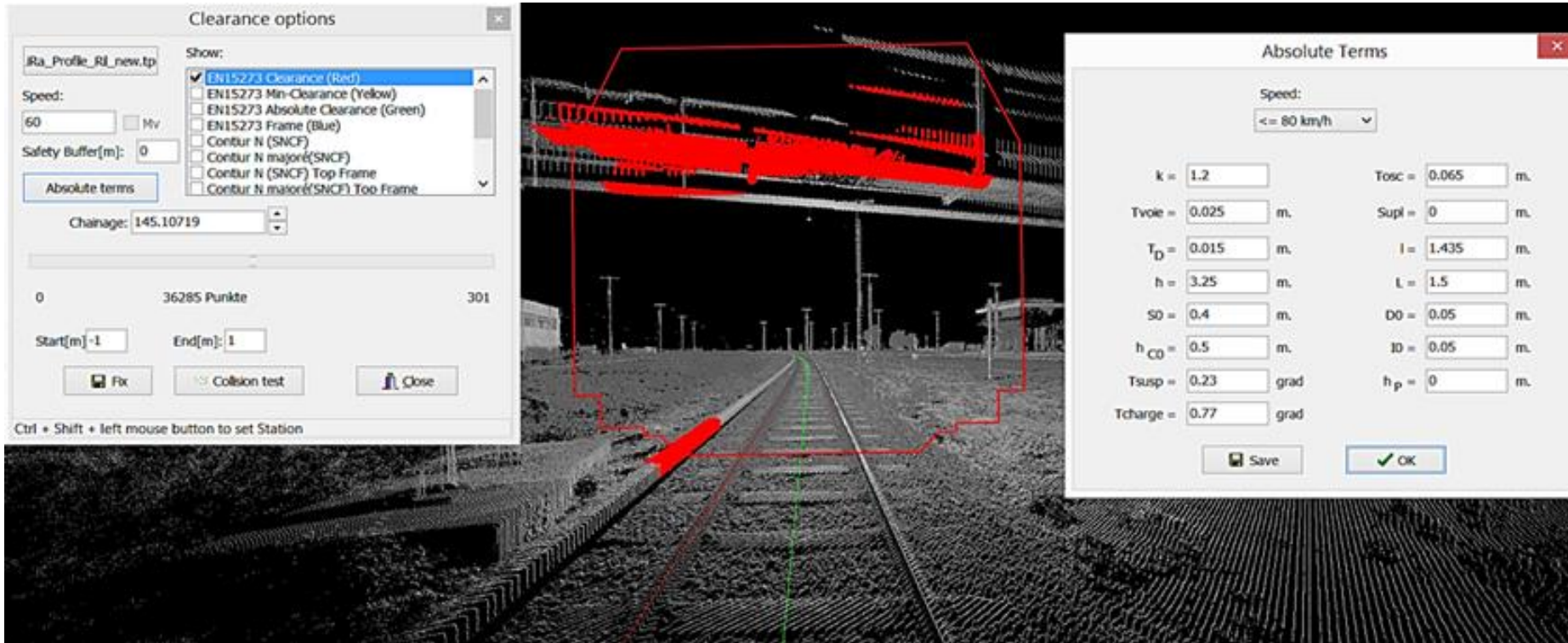


SiRail Suite

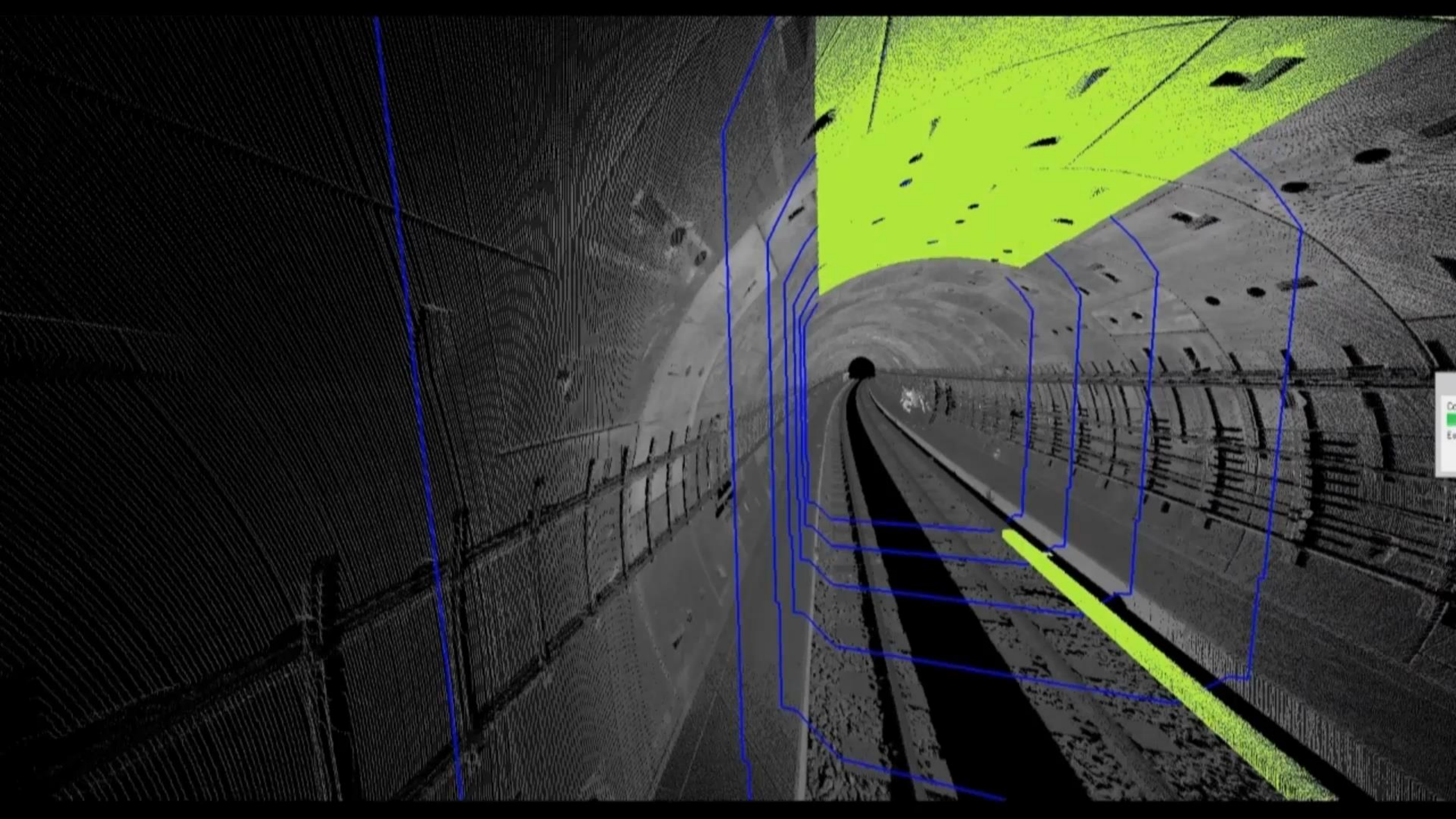


- Batch tunnel deformation analysis
- Automated calculation of differences “designed to as-built structure”
- Batch extraction and adjustment of the as-built rails

SiRail Suite



- 2D Clearance-analysis (static, dynamic): Exact determination of clearance infringements
- Based on European rules and individual Formulas (for example for SNCF - National French Railway Company)
- Calculation of potential clashes also between neighborhood tracks



Traffic Congestion costs \$63.70
per every hour a Trucker drives



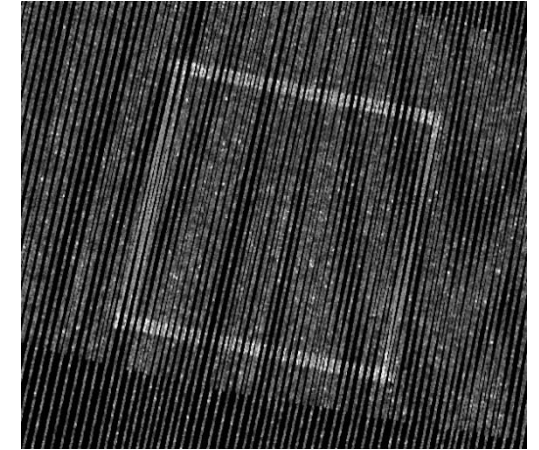
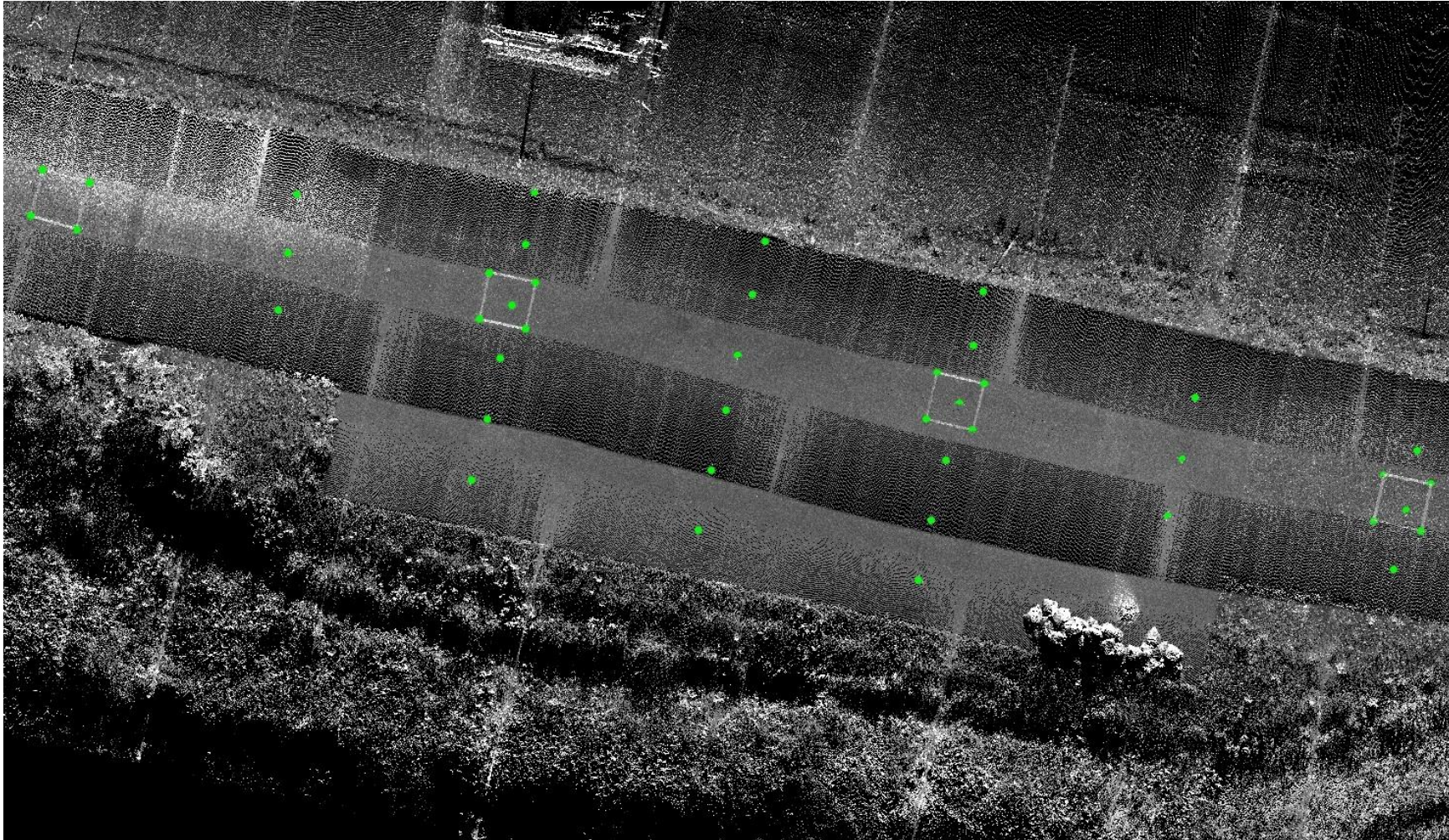


ProScan

- Kinematic Scanning
- TPS and GNSS Positioning
- Asphalt Thickness Layer
- Tunnel Deformation
- Ground Elevation Map

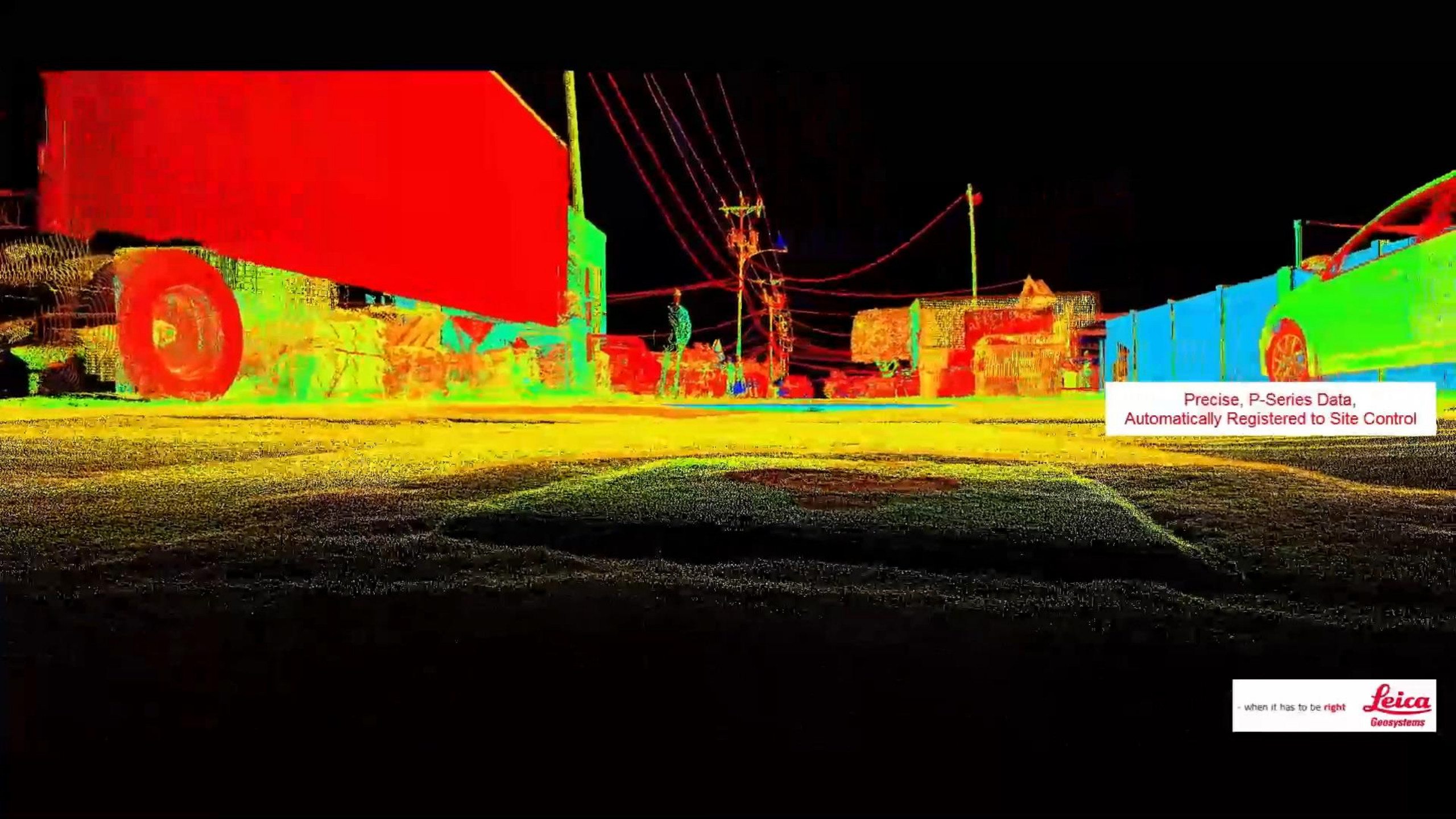


Paved Surface Point Density



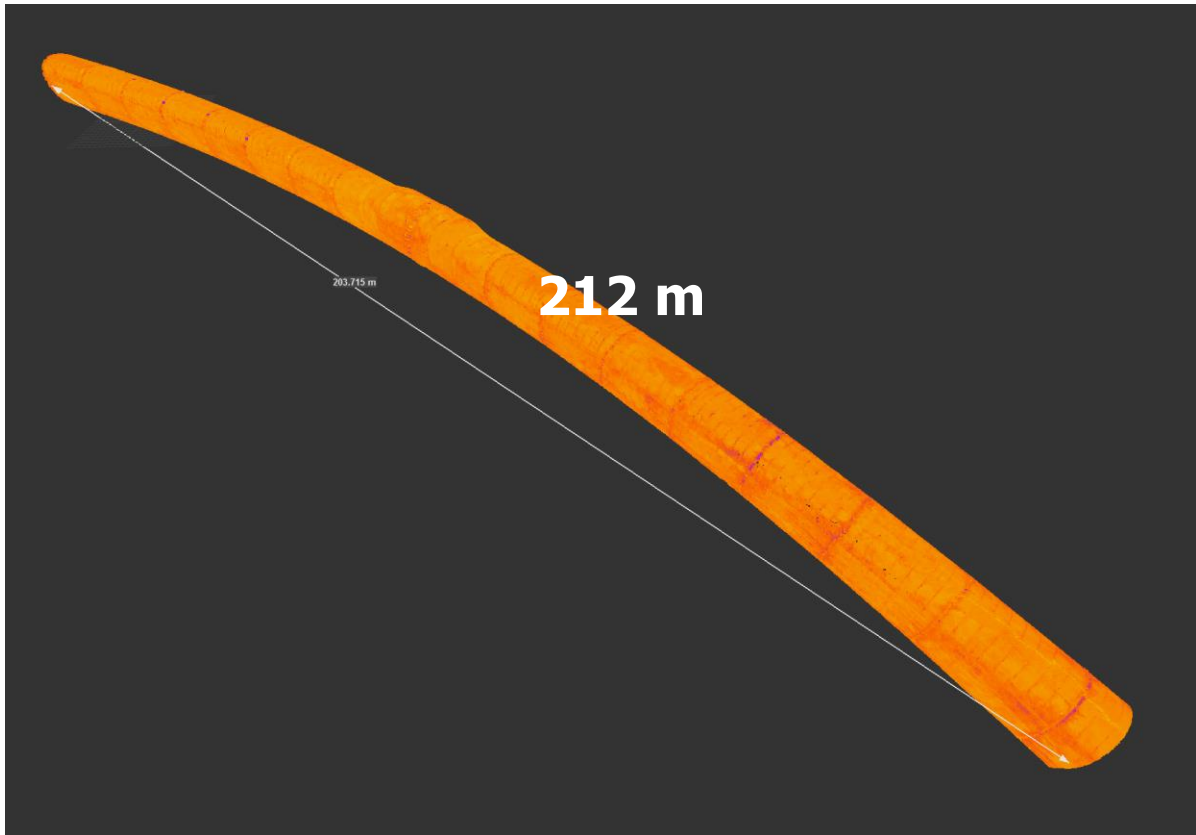
More than 60K points
in a 1x1m square





Precise, P-Series Data,
Automatically Registered to Site Control

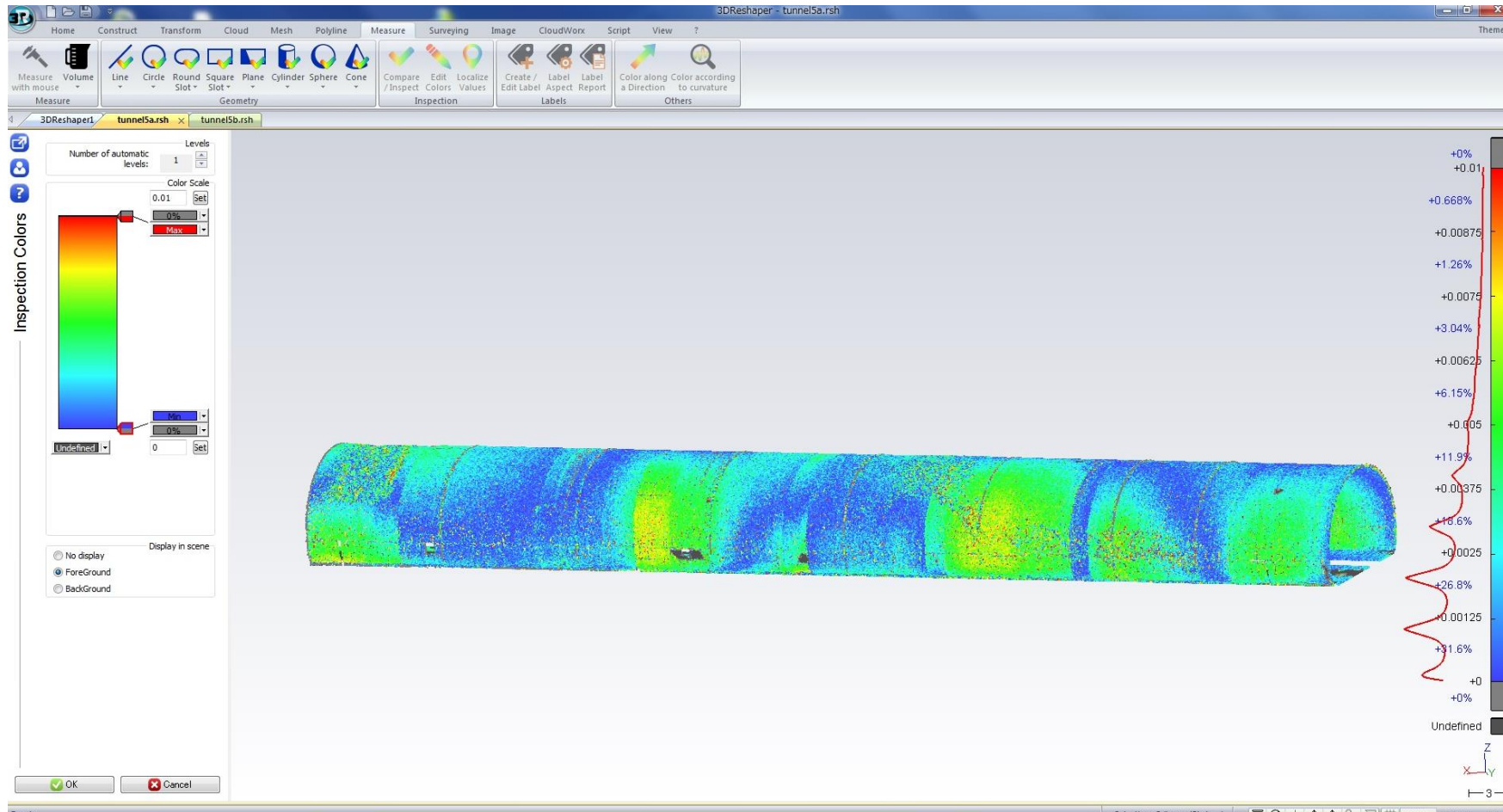
Applications: Tunnel



Kinematic Laser Scanning:

- 102 Million Points
- Data Captured in 27 Minutes
- Data Processed in 30 Minutes
- Length of Trajectory 212 m
- Resolution 6 mm

Applications: Tunnel



Tunnel Deformation

PRODUCTIVITY

—— 谢 谢 ——

